

Tasks to be carried out:

Please write starting time (indicating h/m/s): _____

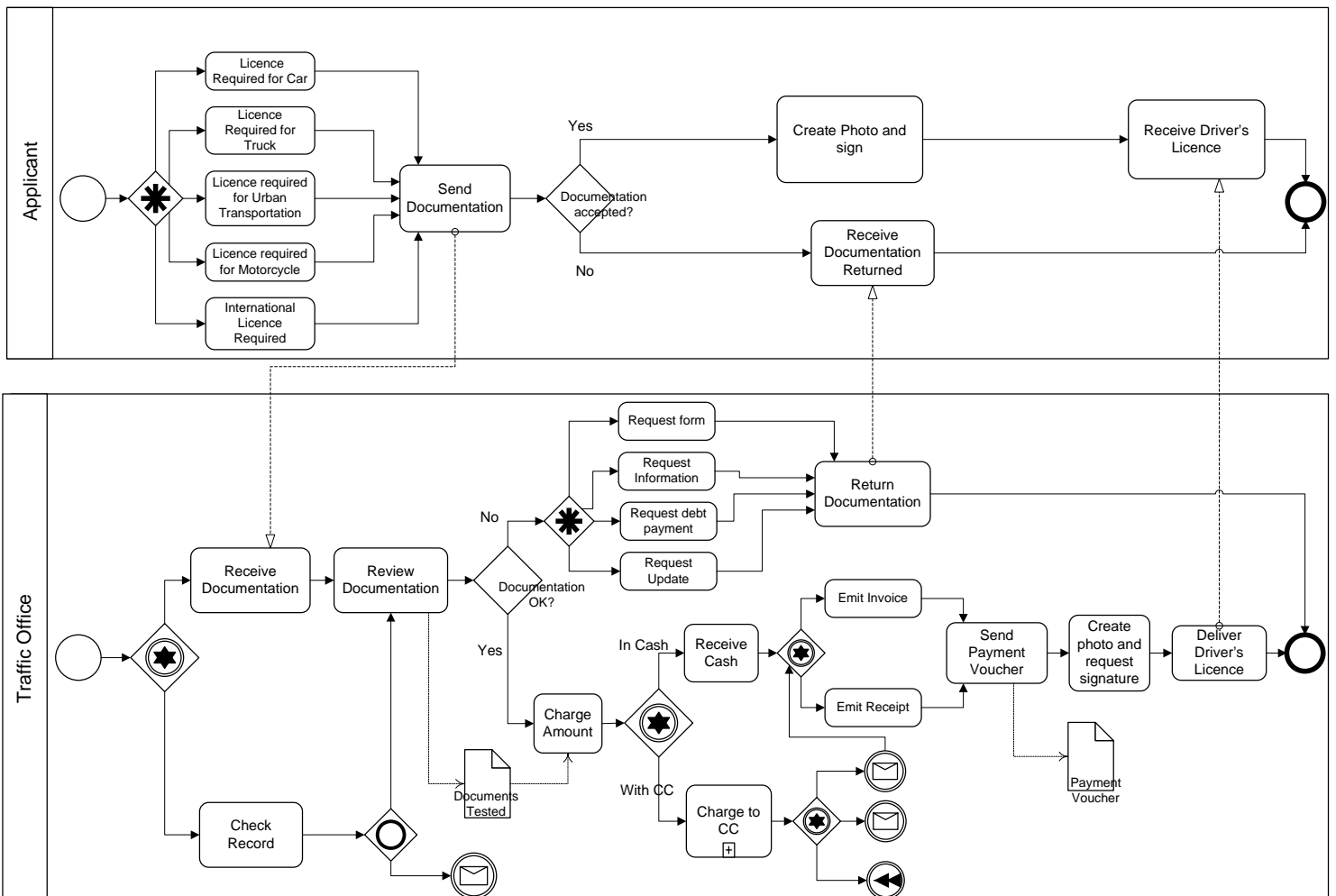
1) Read and carry out the necessary modifications in order to satisfy the following requirements:

1. After carrying out the **“Check records”** activity, you must decide whether there are **“any debts pending?”** If there ARE debts pending then the process must be terminated by indicating what compensation should be paid. If there are NO debts pending then the process should continue as was originally established.
2. After carrying out the **“Return documents”** activity, the new **“Issue repayment report”** and **“Issue debt payment letter”** activities must be carried out in parallel. The processes terminates after each of these activities has been carried out.

Please write finishing time (indicating h/m/s): _____

2) Please give your personal evaluation of the ease or difficulty encountered in modifying this business process model.

Very Easy Quite Easy Normal Quite Complex Very Complex



Model 1 – Driver's Licence Process.

Tasks to be carried out:

Please write starting time (indicating h/m/s): _____

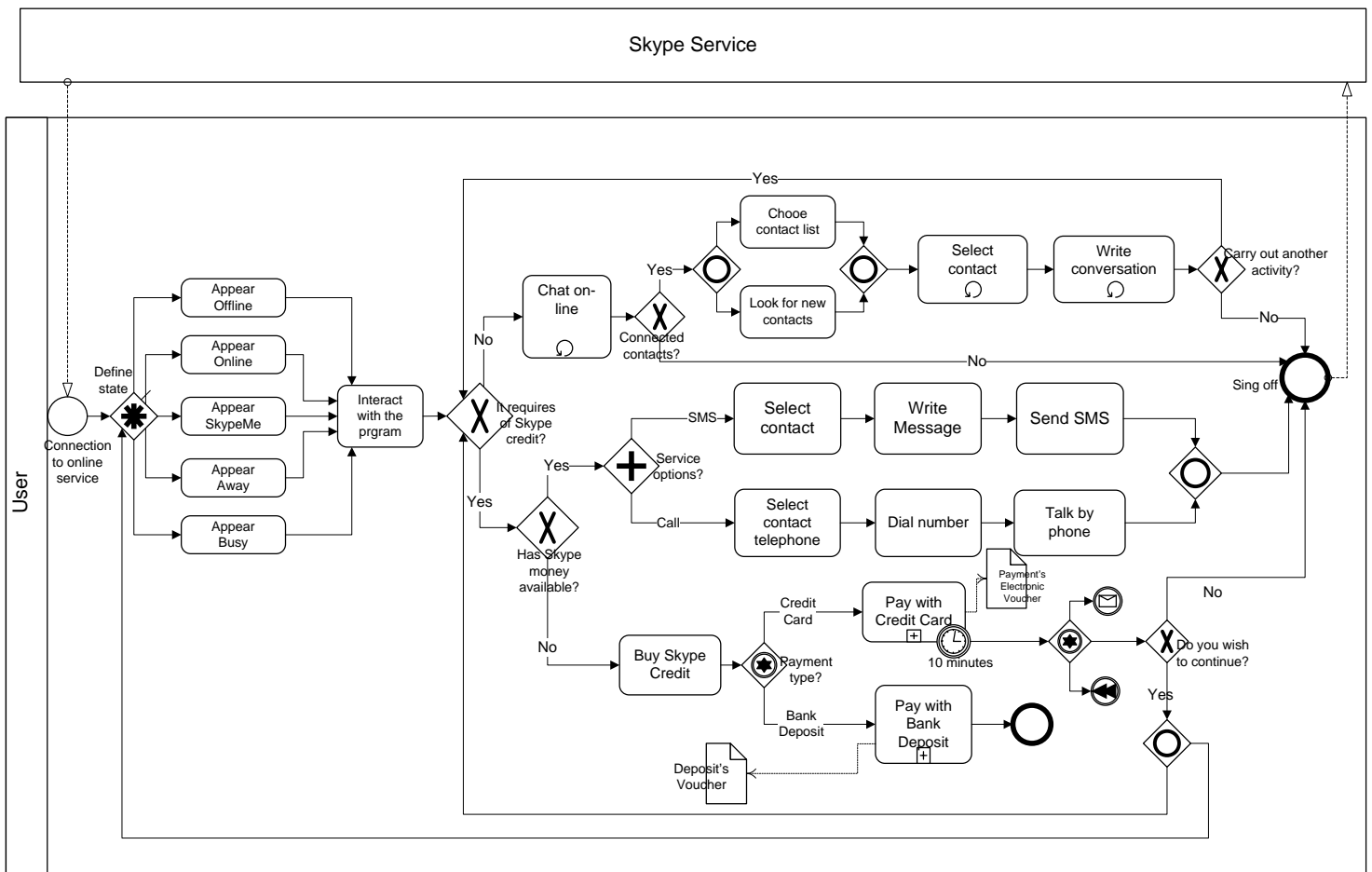
1) Read and carry out the necessary modifications in order to satisfy the following requirements:

1. After carrying out the **“Select contact”** activity, the **“Write dialogue”** activity and the new **“Send files”** activity must be carried out in parallel, and both must converge on the **“carry out another activity?”** decision.
2. If, after carrying out the **“Chat”** activity, NO contacts are connected you must decide whether you wish to **“join a public forum”**. If the answer is ‘NO’ then the process terminates. If the answer is ‘YES’ then you must carry out the new **“Select public forum”** activity and then go on to the **“Carry out another activity?”** decision.

Please write finishing time (indicating h/m/s): _____

2) Please give your personal evaluation of the ease or difficulty encountered in modifying this business process model.

Very Easy Quite Easy Normal Quite Complex Very Complex



Model 2 - Skype Service Process.

Tasks to be carried out:

Please write starting time (indicating h/m/s): _____

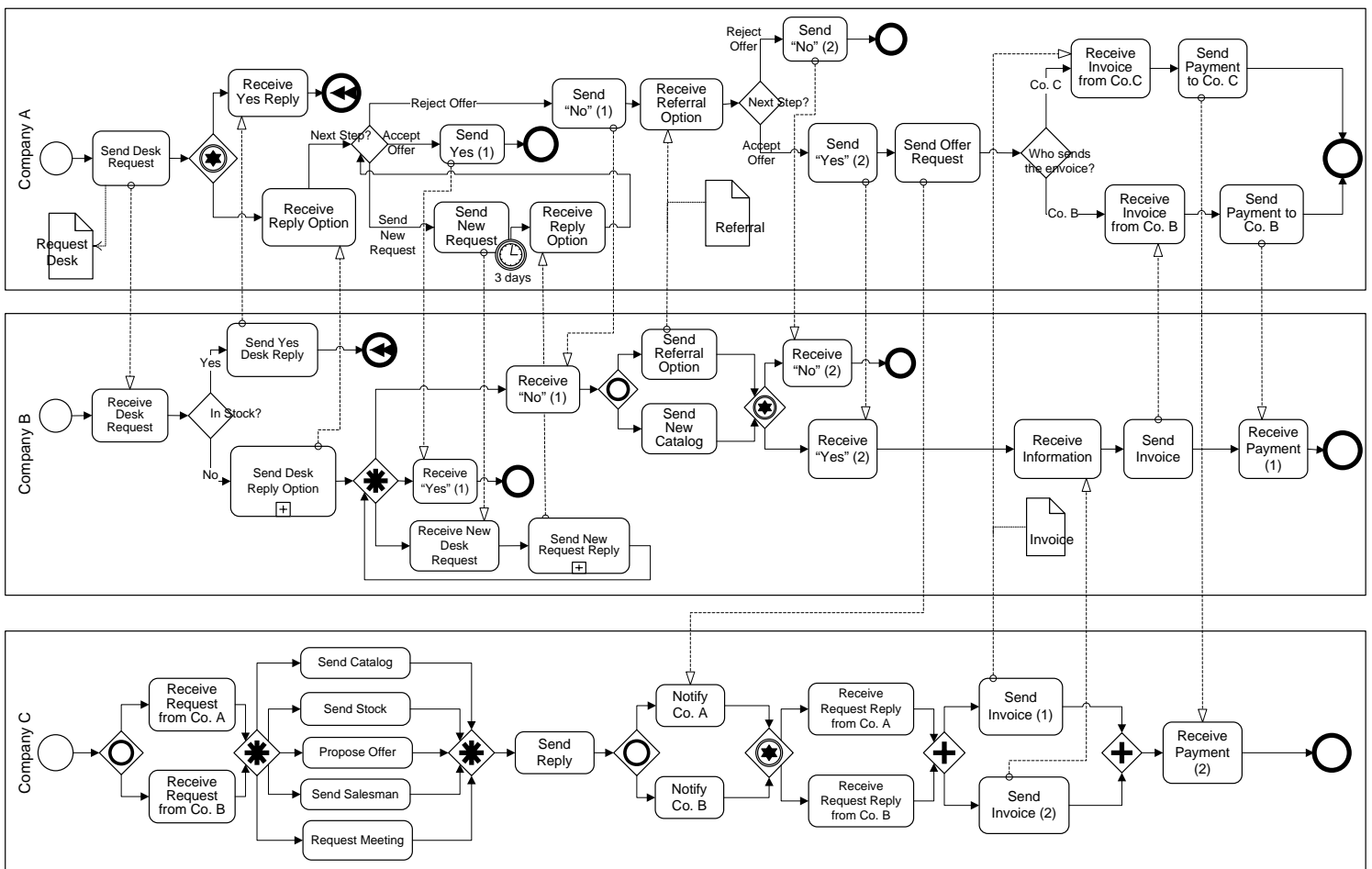
1) Read and carry out the necessary modifications in order to satisfy the following requirements:

1. After carrying out the **“Receive information”** activity in Company B, you must decide whether **“the information is correct”**. If it IS correct you must carry out the **“Send Account”** activity. if it is NOT correct you must terminate the process.
2. After carrying out the **“Receive ‘No’ (2)”** activity, rather than terminating the process you must again decide whether you wish to carry out the **“Send option remission”** and/or **“Send new catalogue”** activities.

Please write finishing time (indicating h/m/s): _____

2) Please give your personal evaluation of the ease or difficulty encountered in modifying this business process model.

Quite Easy Very Easy Normal Quite Complex Very Complex



Model 3 - Supply Chain Process

Tasks to be carried out:

Please write starting time (indicating h/m/s): _____

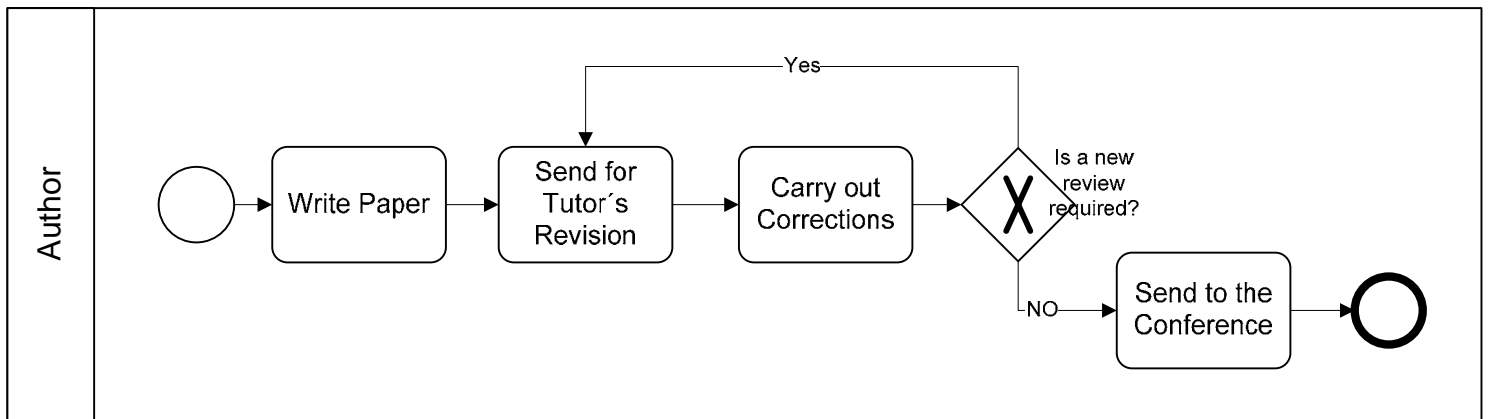
1) Read and carry out the necessary modifications in order to satisfy the following requirements:

1. After the start event you must decide whether the “*Congress is relevant?*”. If the response is NO then the process terminates. If it is YES then a new activity – “**Write paper**” – must be carried out.
2. If, after carrying out the “**Effect corrections**” activity, you do NOT require a new review, then the “**Send to congress**” activity and the new “**Send copy to all authors**” activity must be carried out. The process terminates after both these activities have been carried out.

Please write finishing time (indicating h/m/s): _____

2) Please give your personal evaluation of the ease or difficulty encountered in modifying this business process model.

Very Easy Quite Easy Normal Quite Complex Very Complex



Model 4 – Paper’s Development Process

Tasks to be carried out:

Please write starting time (indicating h/m/s): _____

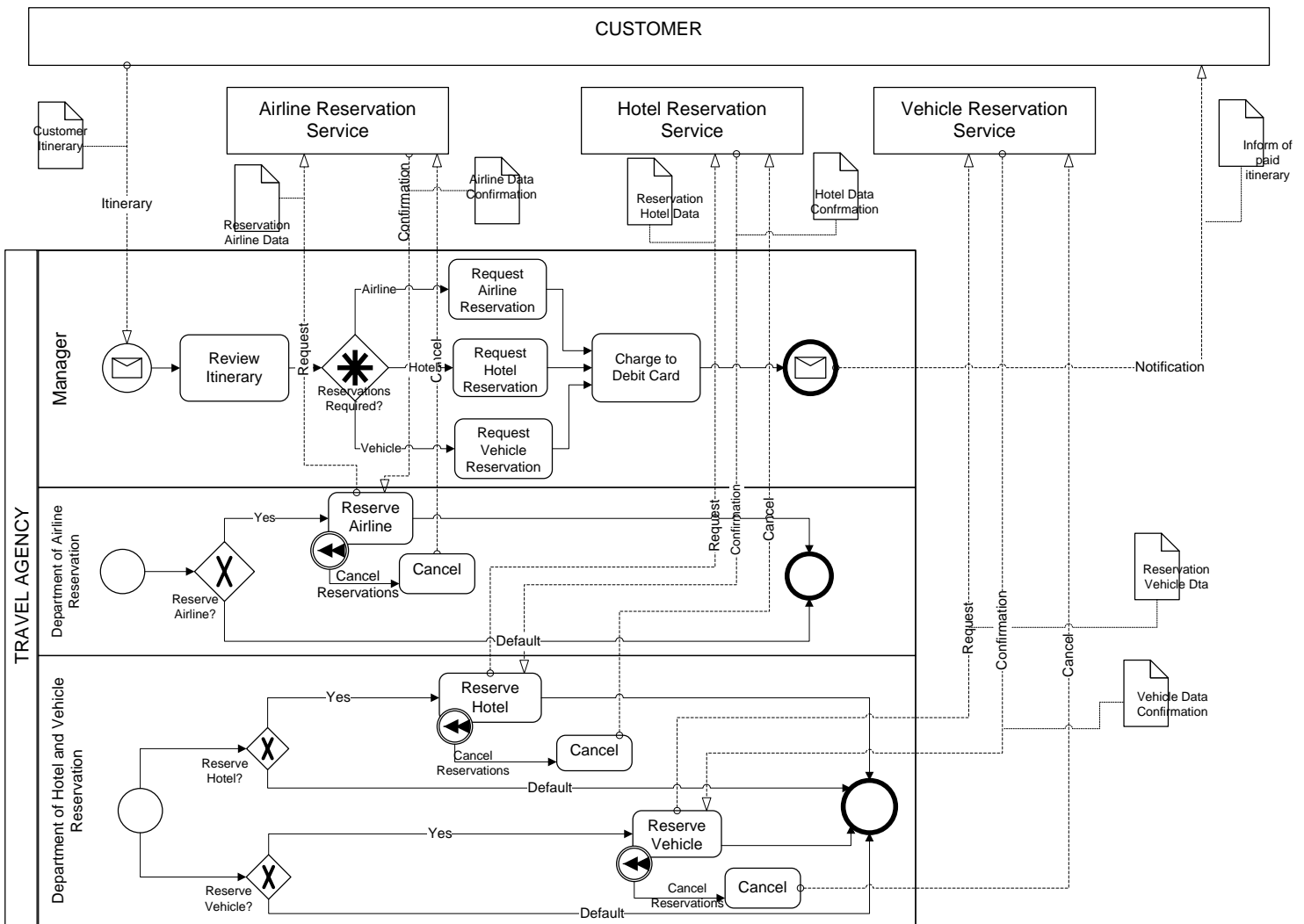
1) Read and carry out the necessary modifications in order to satisfy the following requirements:

1. In the case of wishing to cancel a reservation, the message flow sent by the **“Flight reservation department”** to the **“Flight Reservation Service”** must include an object containing the *“Flight cancelation data”*.
2. When the **“Effect charge to debit card”** activity is carried out, a message flow must be sent which will be communicated to a new entity denominated as **“Bank entity”**.

Please write finishing time (indicating h/m/s): _____

2) Please give your personal evaluation of the ease or difficulty encountered in modifying this business process model.

Very Easy Quite Easy Normal Quite Complex Very Complex



Model 5 - Itinerary Reservation Process.

Tasks to be carried out:

Please write starting time (indicating h/m/s): _____

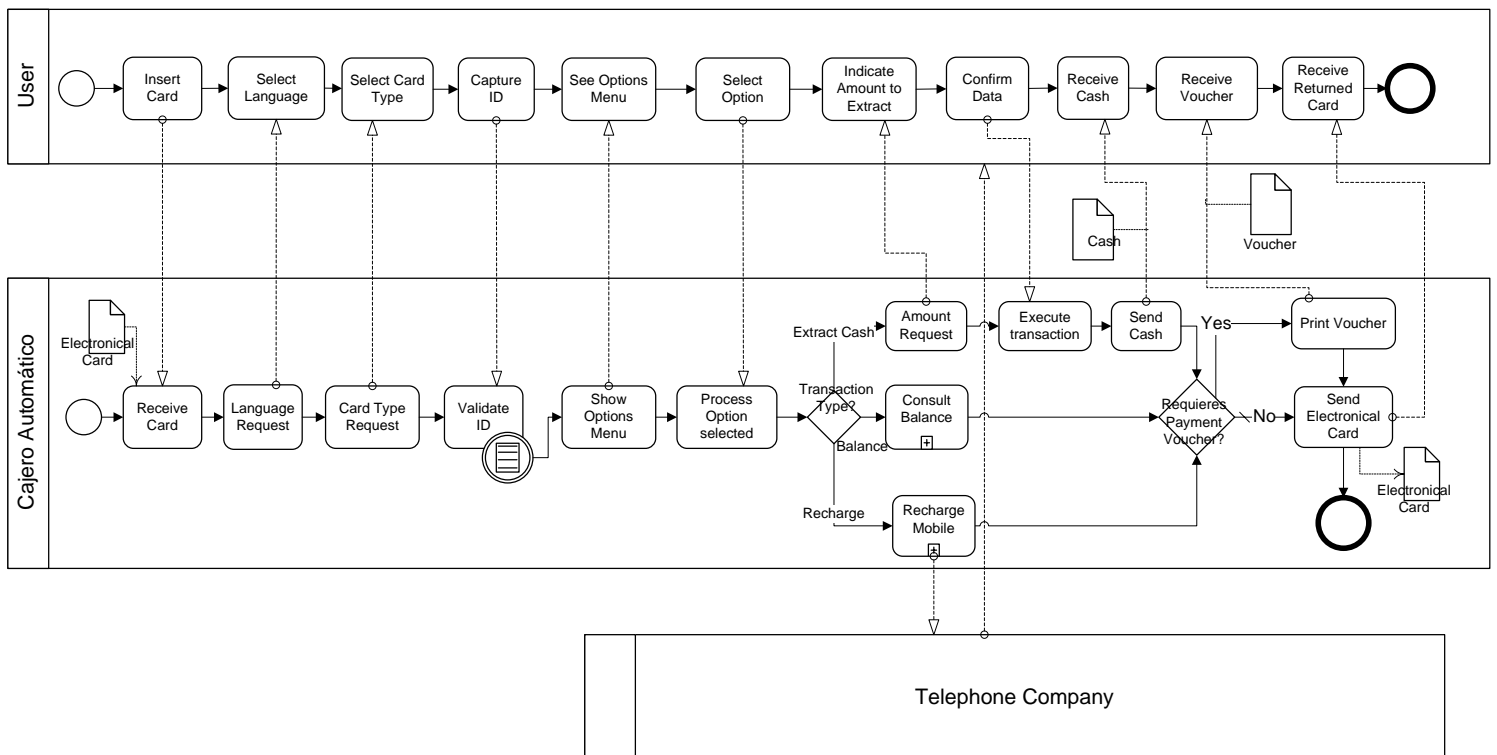
1) Read and carry out the necessary modifications in order to satisfy the following requirements:

1. When carrying out the **“Validate ID”** activity, it is necessary to send a message flow which will be communicated to the new entity denominated as **“Computer Validation System”**.
2. The **“Telephone Company”** message flow reply sent to the **“User”** must include the **“SMS of Confirmation”** data object.

Please write finishing time (indicating h/m/s): _____

2) Please give your personal evaluation of the ease or difficulty encountered in modifying this business process model.

Very Easy Quite Easy Normal Quite Complex Very Complex



Model 6 – Cash Point Process

Tasks to be carried out:

Please write starting time (indicating h/m/s): _____

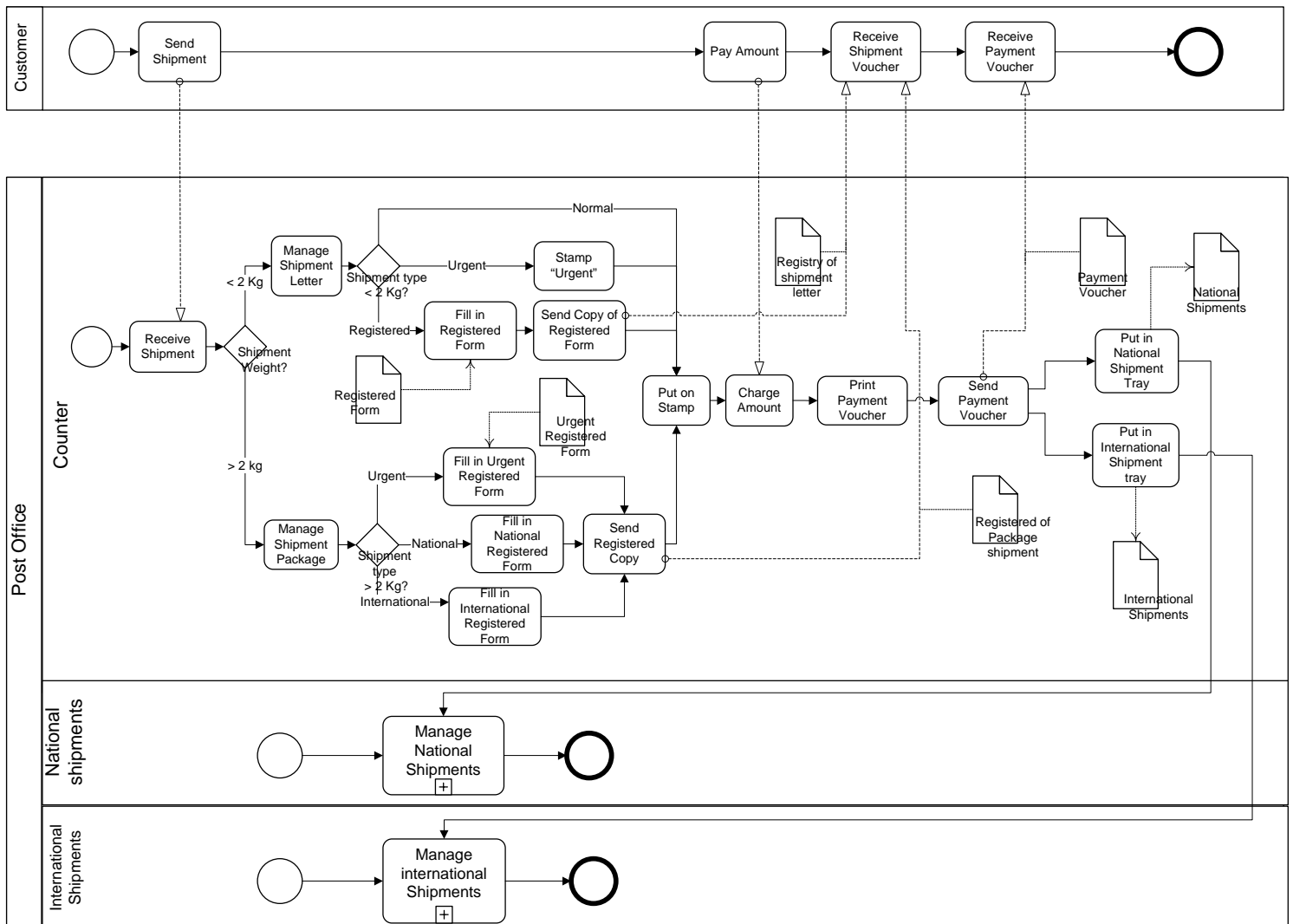
1) Read and carry out the necessary modifications in order to satisfy the following requirements:

1. To carry out the **“Fill in International Certificate Form”** activity the **“International Certificate Form”** is necessary as the data object entrance document.
2. You wish to indicate that all the activities to be carried out if the object sent has ‘a weight > 2kg’ are the responsibility of the **“Packaging Service”** participant (roll).

Please write finishing time (indicating h/m/s): _____

2) Please give your personal evaluation of the ease or difficulty encountered in modifying this business process model.

Very Easy Quite Easy Normal Quite Complex Very Complex



Model 7– Postal Shipments Process

Tasks to be carried out:

Please write finishing time (indicating h/m/s): _____

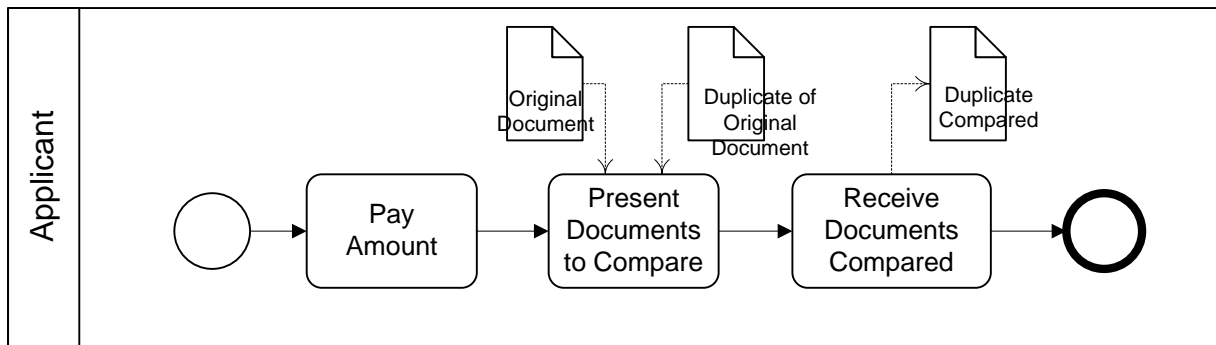
1) Please give your personal evaluation of the ease or difficulty encountered in modifying this business process model.

1. When carrying out the **“Pay Duty”** activity, a flow message must be sent which will be communicated to the new entity denominated as **“Treasury”**.
2. You wish to indicate a flow message reply from the **“Treasury”** entity to the **“Interested party”** which includes the **“SMS of confirmation”** data object.

Please write finishing time (indicating h/m/s): _____

2) Please give your personal evaluation of the ease or difficulty encountered in modifying this business process model.

Very Easy Quite Easy Normal Quite Complex Very Complex



Model 8 - Compare Documents

Tasks to be carried out:

Please write starting time (indicating h/m/s): _____

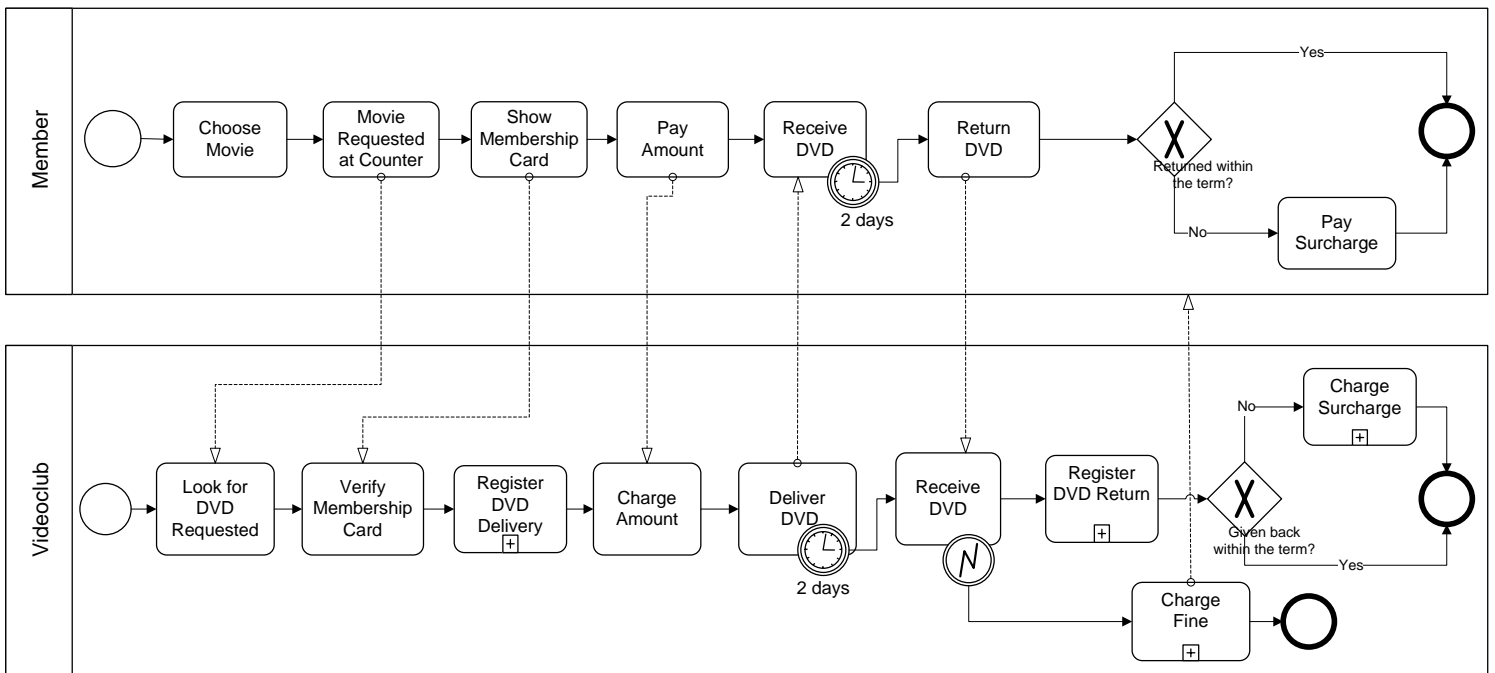
1) Read and carry out the necessary modifications in order to satisfy the following requirements:

1. After carrying out the **“Payment of Fine”** sub-process, you wish to carry out a new **“Issue anomaly report”** activity and then terminate the process.
2. You wish to indicate that when carrying out the **“Verify associate’s credentials”** activity a error intermediate event may occur in said activity, in which case a new **“Cancel service”** activity must be carried out.

Please write finishing time (indicating h/m/s): _____

2) Please give your personal evaluation of the ease or difficulty encountered in modifying this business process model.

Very Easy Quite Easy Normal Quite Complex Very Complex



Model 9 – Video Club Process

Tasks to be carried out:

Please write starting time (indicating h/m/s): _____

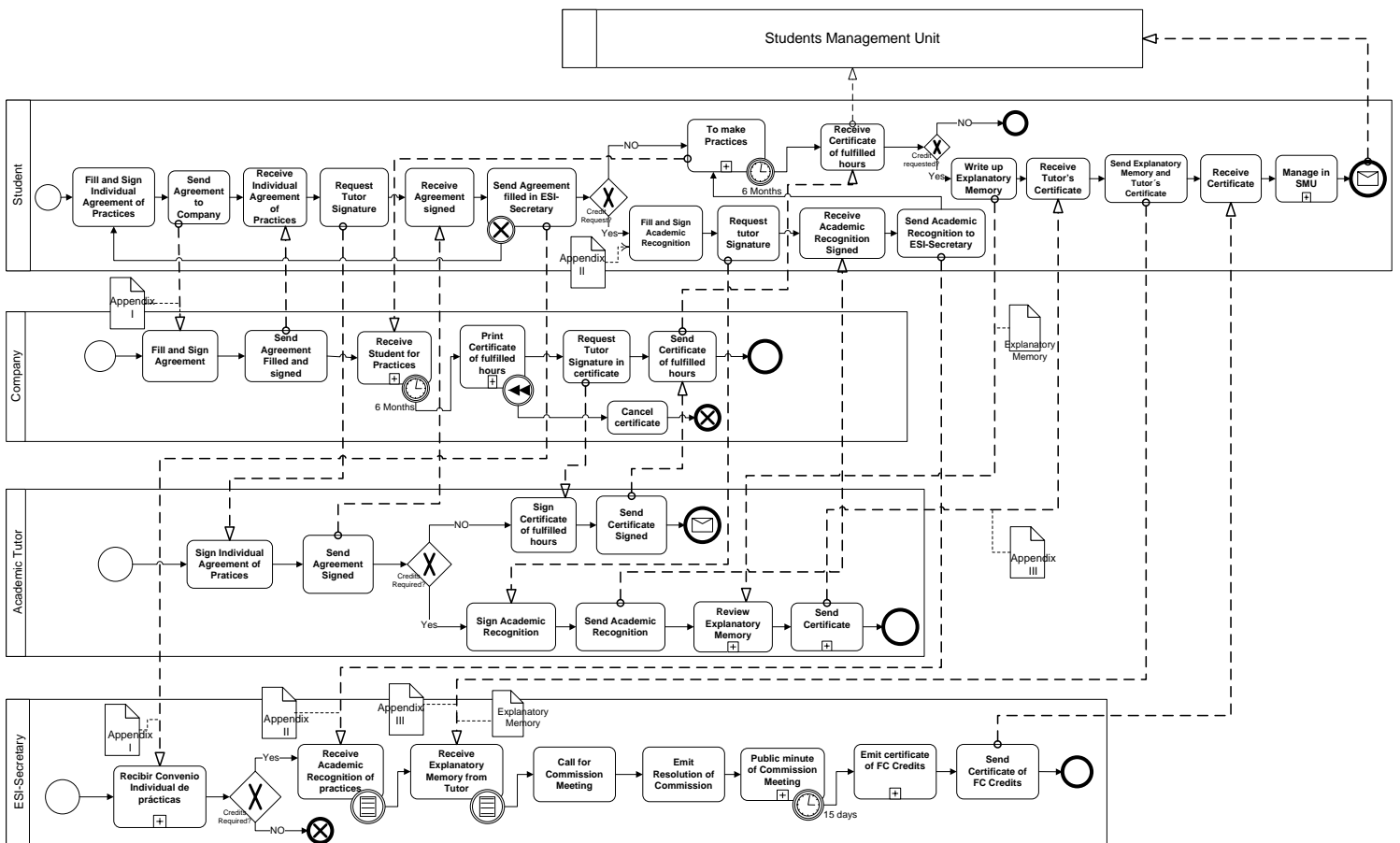
1) Read and carry out the necessary modifications in order to satisfy the following requirements:

1. After carrying out the **“Review explicative memory”** sub-process, you wish a period of three days to pass before the **“Issue certificate”** sub-process is carried out.
2. After carrying out the **“Deliver certificate of hours worked”** activity, you wish to carry out the new **“Include report in Labour Exchange”** activity, and then terminate the process.

Please write finishing time (indicating h/m/s): _____

2) Please give your personal evaluation of the ease or difficulty encountered in modifying this business process model.

Very Easy Quite Easy Normal Quite Complex Very Complex



Model 10 - Management of Practices in Companies

Tasks to be carried out:

Please write starting time (indicating h/m/s): _____

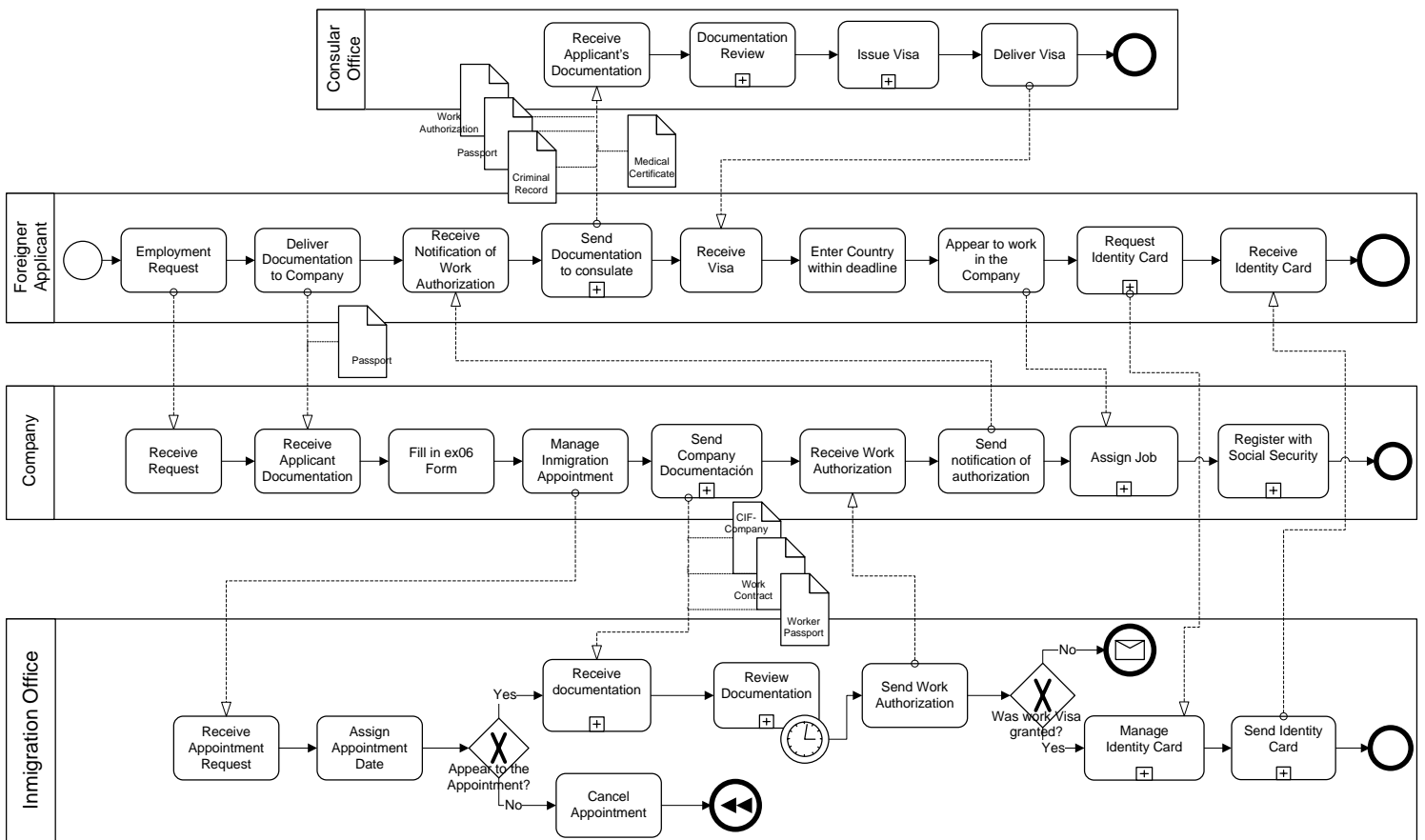
1) Read and carry out the necessary modifications in order to satisfy the following requirements:

1. You wish to indicate that the new **“Notify visa refusal”** activity must be carried out if the Foreign Office does NOT authorise the work visa, and that the process must, in continuation, be terminated.
2. After carrying out the **“Review documentation (1)”** sub-process, you wish the period of one month to pass in the Consulate Office before the **“Issue Visa”** sub-process is carried out.

Please write finishing time (indicating h/m/s): _____

2) Please give your personal evaluation of the ease or difficulty encountered in modifying this business process model.

Very Easy Quite Easy Normal Quite Complex Very Complex



Model 11 –Work Contract for Foreigners

Tasks to be carried out:

Please write starting time (indicating h/m/s): _____

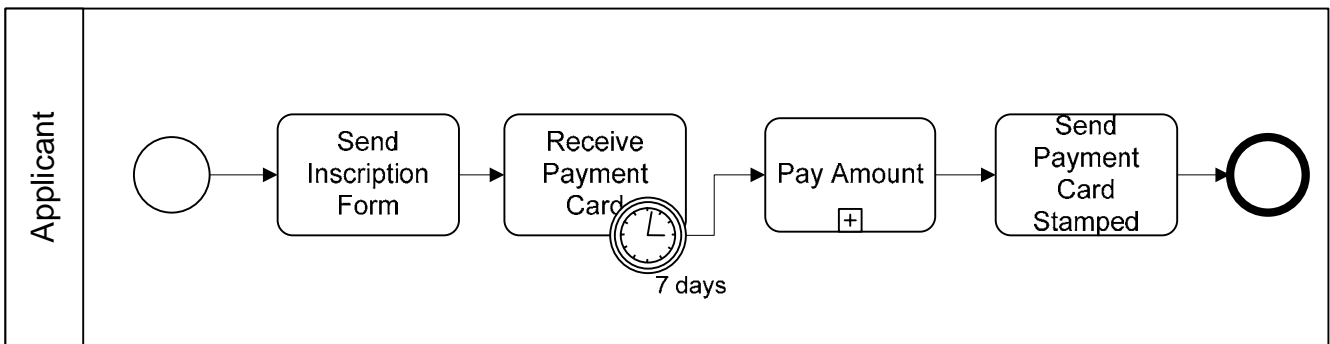
1) Read and carry out the necessary modifications in order to satisfy the following requirements:

1. You wish to indicate that when carrying out the **“Pay Duty”** sub-process, an intermediate event of compensation may occur in said activity, in which case a new **“Cancel inscription”** activity must be carried out.
2. After carrying out the **“Present inscription form”** activity, you wish to carry out a new **“Solicit payment card”** activity, and then carry out the **“Receive payment card”** activity.

Please write finishing time (indicating h/m/s): _____

2) Please give your personal evaluation of the ease or difficulty encountered in modifying this business process model.

Very Easy Quite Easy Normal Quite Complex Very Complex



Model 12 -Inscription to University Sports Unit